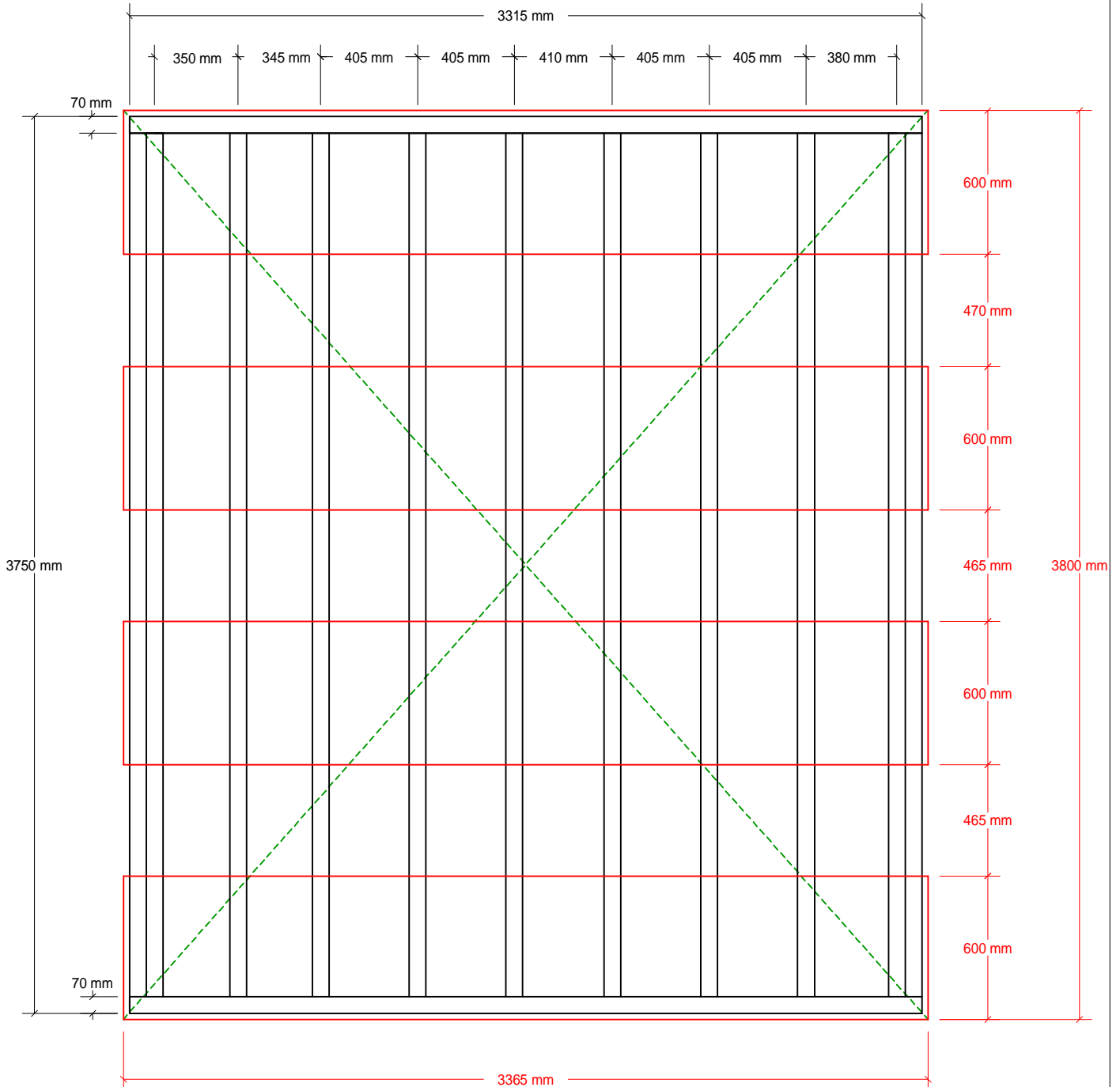


Garden Office Professional 3.4m x 3.8m - BASE + BEARERS

OVERALL MINIMUM BASE DIMENSION - 3365 x 3800mm

(ALLOWING A MINIMUM 25 MM AROUND LOG CABIN BASE)

BACK OF GARDEN OFFICE



FRONT OF GARDEN OFFICE

Diagonal Measurements

The diagonal measurements must be the same in order to keep base square.

Concrete Strips

Timber Bearers